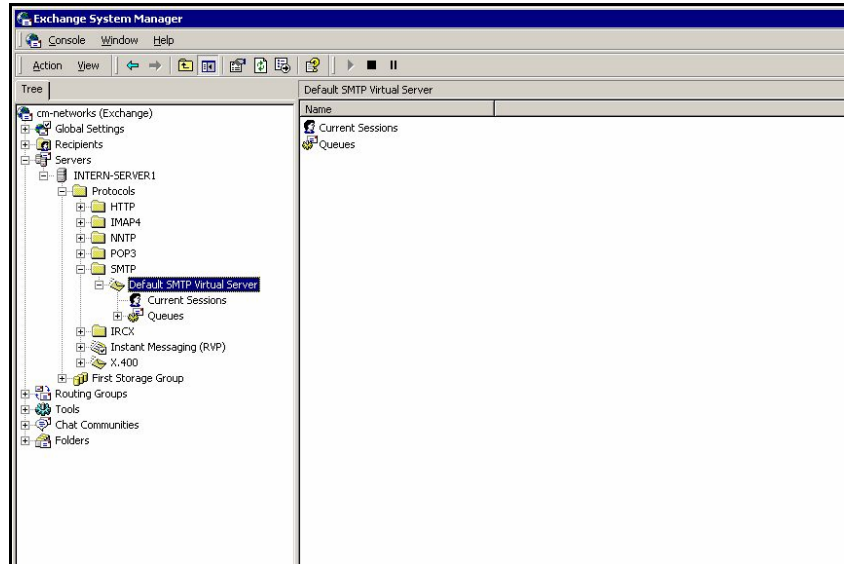


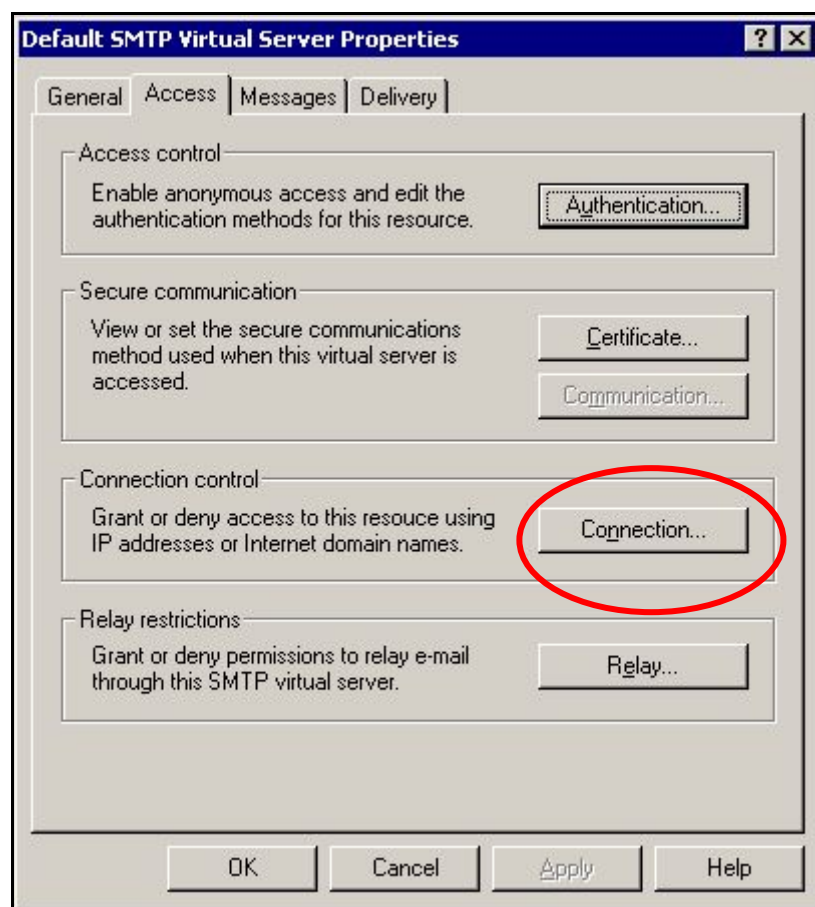
Setup of Microsoft Exchange 2000 for mailFence and spamFence from Comendo

Open Microsoft Exchange Manager.

Click down to "Virtual Server" section
("Administrative Groups" > "Servers" > "Your Mail Server" > "Protocols" > "SMTP").



Click "Properties" on "Action" menu and choose "Access" section in "Default SMTP Virtual Server Properties".



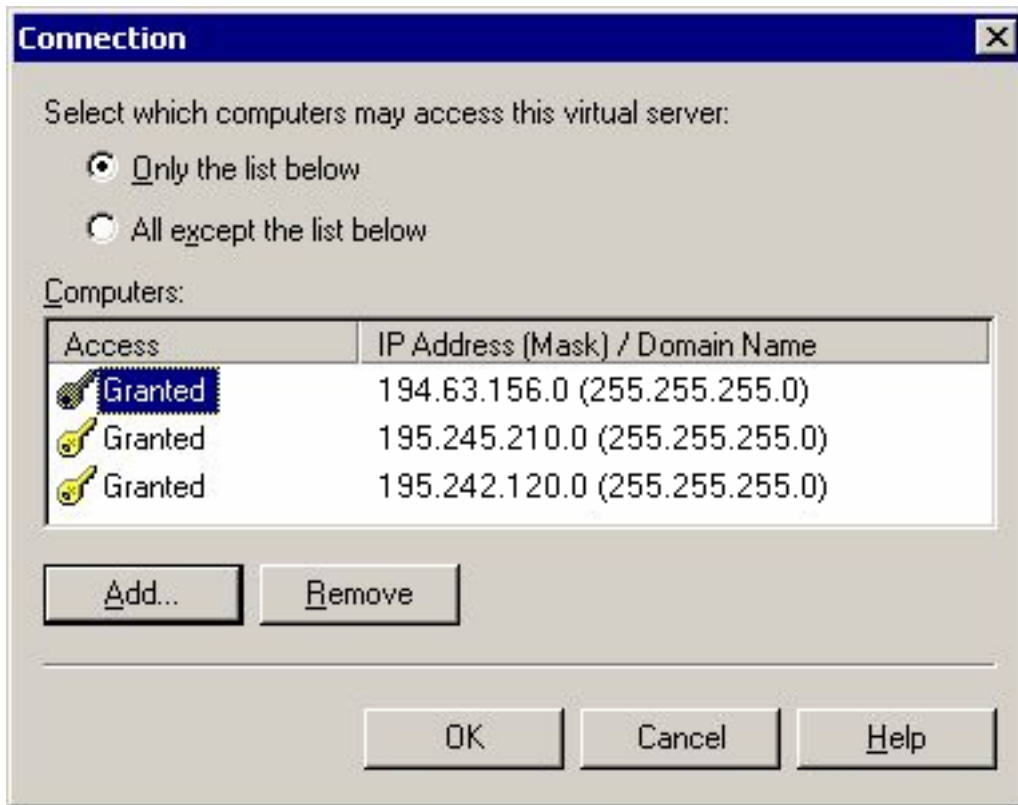
Click on "Connection".

In "Connection" window choose the top radio button "Only the list below", then click on "Add..." and insert following IP addresses:

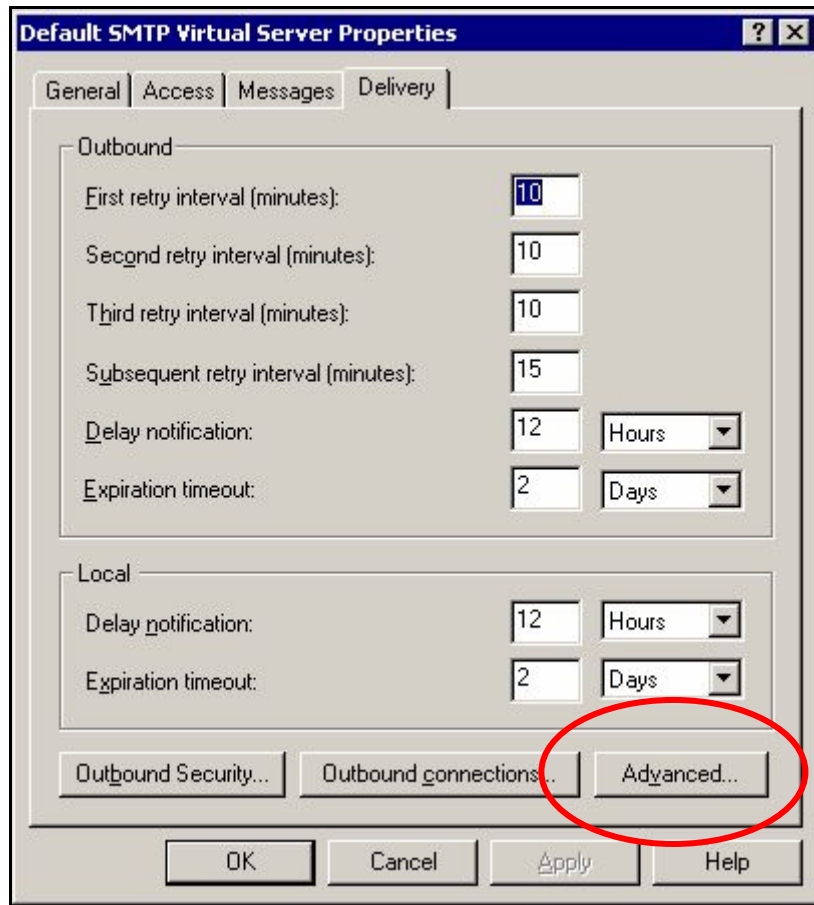
Allow connenctions from: 194.63.156.0 Netmask: 255.255.255.0

Allow connenctions from: 195.245.210.0 Netmask: 255.255.255.0

Allow connenctions from: 195.242.120.0 Netmask: 255.255.255.0



Click "OK" to add restrictions and return to "Connection" window. Click now "OK" and then on "Delivery" section in "Default SMTP Virtual Server Properties" window. Here click on "Advanced".



In "Advanced Delivery" window you must set your outgoing SMTP server under "Smart host". Add as shown: "smtprelay.comendo.dk".



After that you click "OK" to close the window and "OK" to close "Default SMTP Virtual Server Properties" window.

Check for Open Relay!

Remember to see that your mailservier is not open for Relaying. Use www.abuse.net/relay.html to test your system. You have to register yourself to use this service, but it is quite fast and they provide a good service.