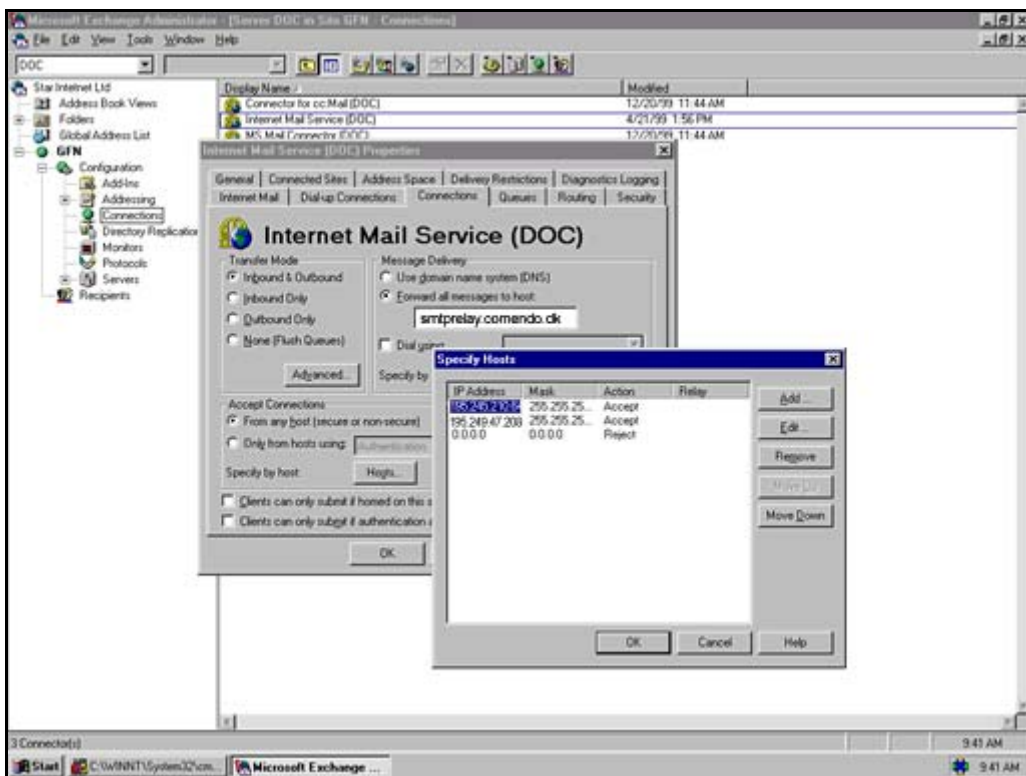


Setup of Microsoft Exchange v5.5 Internet Mail Service for mailFence or spamFence from Comendo A/S

1. Open Microsoft Exchange Administrator
2. Go to "Configuration" and select "Connections"
3. Open "Internet Mail Service" window
4. Go to level "Connections"
5. In "Message Delivery" sektion choose "Forward all messages to host". In text field write: hostname on the server you vil use as outgoing server: "smtprelay.comendo.dk".
6. In "Accept Connections" sektion choose "From any host [secure or non-secure]" and then click on "Specify by host".
7. In "Specify Hosts" window choose "Add"
8. Accept: IP adresse: 194.63.156.0, Subnet mask: 255.255.255.0
9. Accept: IP adresse: 195.245.210.0, Subnet mask: 255.255.255.0
10. Accept: IP adresse: 195.242.120.0, Subnet mask: 255.255.255.0
11. Reject: IP adresse: 0.0.0.0, Subnet mask: 0.0.0.0
This line MUST be the last line since it rejects all IP addresses which are not the same as the 3 previous lines.

To make the changes effective you must stop and start "Internet Mail Service" under Services in control panel



Check for Open Relay!

Remember to see that your mailservier is not open for Relaying. Use www.abuse.net/relay.html to test your system. You have to register yourself to use this service, but it is quite fast and they provide a good service.